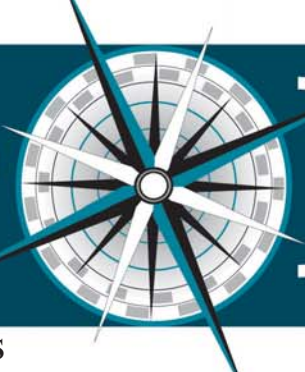




# COAST NEWS



YOUR COMMUNITY IN YOUR HANDS

Avila Beach • Shell Beach • Pismo Beach • Grover Beach • Arroyo Grande • Halcyon • Oceano



More than 200 people turned out to taste the competition as local bartenders competed in the first annual Central Coast Martini Shakedown. See more on page 11

Photos by Christopher Gardner

## Holding Pattern

By Graham Haworth

## Grover's Political Race Begins

By Theresa-Marie Wilson

Three potential candidates have shown interest in the first directly elected mayor's race in Grover Beach's history.

Chuck Aston, who has served on the city council for the past four years, has announced his plans to enter the race for the November election.

"As mayor, I feel the position is my chance to be your [citizens] eyes, ears and voice out there," said Aston, who has lived in the

city for 18 years. "I don't think elected officials should hold themselves out as an expert on anything... We should be out there listening and voicing the concerns of our constituents and see that the city moves in the right direction."

Ashton's goals are to increase the city's sales tax revenues by bringing in new businesses and supporting the existing business

See Political on page 18

With American and Delta airlines pulling out of the San Luis Obispo Regional Airport throwing expansion plans into a holding pattern, the County Board of Supervisors will receive a status report regarding the airport's future. Issues raised in the report will include the business viability of the airport and the future of capital improvement projects (CIPs) in the wake of the departure of American and Delta. The final report will be prepared in conjunction with Jacobs Consultancy; the Board says it expects to be presented the report on September 9.

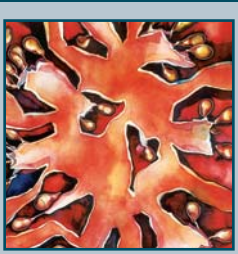
According to a Board of

Supervisors agenda report, the airport remains a viable business operation that runs effectively, and its finances are well managed. A preliminary review of the operations budget after the announcement of the airlines' departures shows that the direct financial impact of the departures will result in a 5 percent revenue shortfall for the current 2008–2009 fiscal year. Nevertheless, according to the report, "expenditures will be managed to ensure revenues are not exceeded."

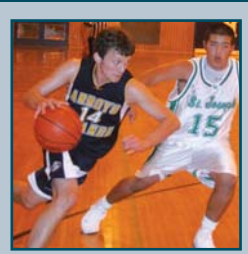
As for CIPs, the projects are more directly affected by the

See Holding on page 17

### INSIDE INFORMATION



What's Happening page 6



Straight To The Hoop page 8



It's Dark In There page 12



The Cars Are Coming page 15